

SERIES 7000 MODEL H LIFTS

TECHNICAL DATA SHEET

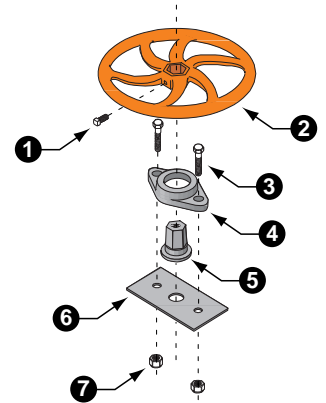
MODEL H1 & H2 HANDWHEEL LIFTS



Model H1 & H2 Handwheel Lift

Features

- Dependable & economical handwheel lift.
- Brass lift nut provides smooth operation and extended life.
- Available for stems up to 1 1/2" in diameter.
- Handwheel sizes 10" and 14" diameters.
- Rugged cast iron handwheel & collar.



Material Specifications

| Item | Description | Material | Specification |
|------|-------------|-------------------|----------------------|
| 1 | Set Screw | Steel, Plated | ASTM A307, A164 |
| 2 | Handwheel | Cast Iron | ASTM A126, Class B |
| 3 | Hex Bolt | Steel, Plated | ASTM A307, A164 |
| 4 | Collar | Cast Iron | ASTM A126, Class B |
| 5 | Lift Nut | Brass | ASTM B584, Alloy 844 |
| 6 | Base Plate | Steel, Galvanized | ASTM A36 |
| 7 | Hex Nut | Steel, Plated | ASTM A307, A164 |

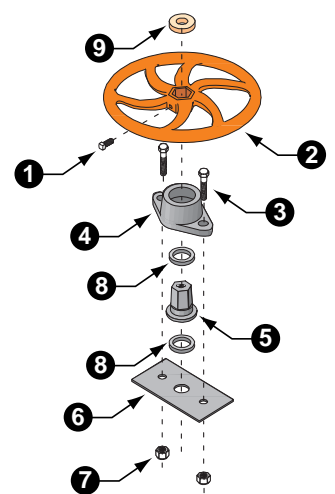
MODEL H1B & H2B HANDWHEEL



Model H1B & H2B Handwheel Lift

Features

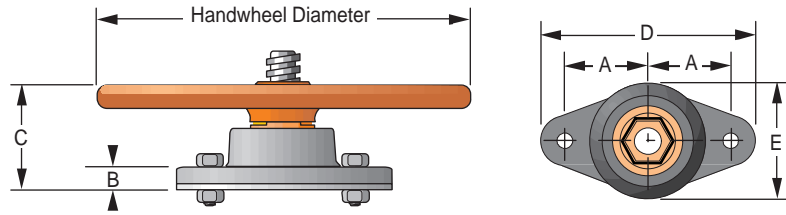
- Lubricated ball bearing design for smooth operation.
- Reduced friction provides increased lift capacity.
- Brass stop nut included.
- Rugged cast iron handwheel & lift housing.
- Handwheel sizes ranging from 18" to 24" diameters.



Material Specifications

| Item | Description | Material | Specification |
|------|-------------|-------------------|----------------------|
| 1 | Set Screw | Steel, Plated | ASTM A307, A164 |
| 2 | Handwheel | Cast Iron | ASTM A126, Class B |
| 3 | Hex Bolt | Steel, Plated | ASTM A307, A164 |
| 4 | Collar | Cast Iron | ASTM A126, Class B |
| 5 | Lift Nut | Brass | ASTM B584, Alloy 844 |
| 6 | Base Plate | Steel, Galvanized | ASTM A36 |
| 7 | Hex Nut | Steel, Plated | ASTM A307, A164 |
| 8 | Bearings | Steel | ASTM A29-79 |
| 9 | Stop Nut | Brass | ASTM B16 |

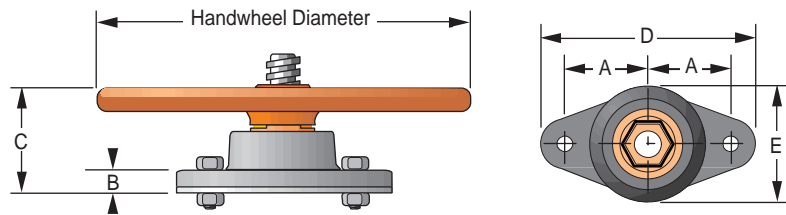
MODEL H1 & H2 HANDWHEEL LIFTS



Dimensional Information

| Lift Model | Hand-wheel Diameter | Stem Diameter | H/W Turns per 1 inch Gate Travel | Lift Capacity (lbs.) | | Dimensions (Inches) | | | | | |
|------------|---------------------|---------------|----------------------------------|----------------------|-----------------|---------------------|------|------|------|------|-----------|
| | | | | 25 lb. H/W Pull | 40 lb. H/W Pull | A | B | C | D | E | Bolt Dia. |
| H-1 | 10" | 7/8" | 2.5 | 900 | 1400 | 2.75 | 0.75 | 3.13 | 7.00 | 3.75 | 1/2 |
| | 10" | 1-1/8" | 2.5 | 700 | 1100 | 2.75 | 0.75 | 3.13 | 7.00 | 3.75 | 1/2 |
| | 14" | 7/8" | 2.5 | 1200 | 1900 | 2.75 | 0.75 | 3.13 | 7.00 | 3.75 | 1/2 |
| H-2 | 14" | 1-1/8" | 2.5 | 1000 | 1600 | 2.75 | 0.75 | 3.13 | 7.00 | 3.75 | 1/2 |
| | 18" | 1-1/8" | 2.5 | 1200 | 1900 | 3.50 | 1.13 | 3.88 | 9.00 | 4.75 | 5/8 |
| | 18" | 1-1/2" | 2.0 | 900 | 1400 | 3.50 | 1.13 | 3.88 | 9.00 | 4.75 | 5/8 |
| | 24" | 1-1/8" | 2.5 | 1500 | 2400 | 3.50 | 1.13 | 3.88 | 9.00 | 4.75 | 5/8 |
| | 24" | 1-1/2" | 2.0 | 1200 | 1900 | 3.50 | 1.13 | 3.88 | 9.00 | 4.75 | 5/8 |
| | 30" | 1-1/8" | 2.5 | 1800 | 2900 | 3.50 | 1.13 | 3.88 | 9.00 | 4.75 | 5/8 |
| | 30" | 1-1/2" | 2.0 | 1500 | 2400 | 3.50 | 1.13 | 3.88 | 9.00 | 4.75 | 5/8 |

MODEL H1B & H2B HANDWHEEL



Dimensional Information

| Lift Model | Hand-wheel Diameter | Stem Diameter | H/W Turns per 1 inch Gate Travel | Lift Capacity (lbs.) | | Dimensions (Inches) | | | | | |
|------------|---------------------|---------------|----------------------------------|----------------------|-----------------|---------------------|------|------|------|------|-----------|
| | | | | 25 lb. H/W Pull | 40 lb. H/W Pull | A | B | C | D | E | Bolt Dia. |
| H-1B | 10" | 7/8" | 2.5 | 980 | 1570 | 2.75 | 0.88 | 4.25 | 7.00 | 3.75 | 1/2 |
| | 10" | 1-1/8" | 2.5 | 850 | 1370 | 2.75 | 0.88 | 4.25 | 7.00 | 3.75 | 1/2 |
| | 14" | 7/8" | 2.5 | 1370 | 2200 | 2.75 | 0.88 | 4.25 | 7.00 | 3.75 | 1/2 |
| | 14" | 1-1/8" | 2.5 | 1200 | 1910 | 2.75 | 0.88 | 4.25 | 7.00 | 3.75 | 1/2 |
| H-2B | 18" | 1-1/8" | 2.5 | 1540 | 2710 | 3.50 | 1.13 | 5.25 | 9.00 | 4.75 | 5/8 |
| | 18" | 1-1/2" | 2.0 | 1190 | 2070 | 3.50 | 1.13 | 5.25 | 9.00 | 4.75 | 5/8 |
| | 24" | 1-1/8" | 2.5 | 2050 | 3280 | 3.50 | 1.13 | 5.25 | 9.00 | 4.75 | 5/8 |
| | 24" | 1-1/2" | 2.0 | 1580 | 2750 | 3.50 | 1.13 | 5.25 | 9.00 | 4.75 | 5/8 |
| | 30" | 1-1/8" | 2.5 | N/A | N/A | 3.50 | 1.13 | 5.25 | 9.00 | 4.75 | 5/8 |
| | 30" | 1-1/2" | 2.0 | 1980 | 3440 | 3.50 | 1.13 | 5.25 | 9.00 | 4.75 | 5/8 |



Fresno Valves & Castings, Inc.

7736 East Springfield Avenue
P.O. Box 40, Selma, CA 93662, U.S.A.

(800) 333-1658

www.fresnovalves.com